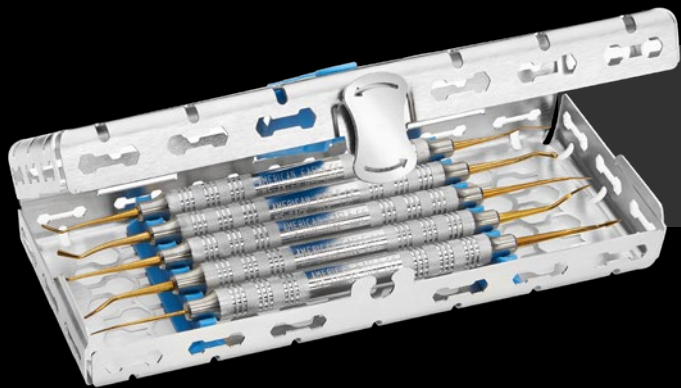


American Eagle INSTRUMENTS®

M5 RESTORATIVE SERIES

The American Eagle M5 Restorative Series was created in collaboration with Dr. Anthony Mak, DDS. This series features five unique restorative instruments made with American Eagle patented technology that delivers a smoother, nonstick surface and allows clinicians to complete 90% of their procedures.



Meets the needs of

90%
of procedures

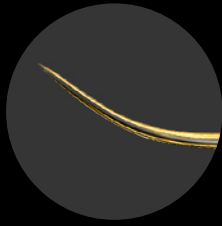
M5 Restorative Series in 1/4 DIN cassette
Cassette is sold separately

All instruments are coated with XP Technology® that delivers a smooth, nonstick surface, and retains the sharpness of the carver and sharp paddle. The instruments that need to cut, cut... the ones that need to be smooth and sculpt are nonstick.

Dr. Anthony Mak, DDS



WHAT INSTRUMENTS ARE PART OF THE **M5 RESTORATIVE SERIES** ?



DG Explorer: long and pointy to remove excess material around edges. The long tip works well when layering in deep cavities.



M5-SCULPT

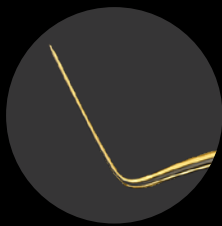
ITEM #: M5-SCULPT

FOR FINISHING & CLEAN-UP

Universal instrument used for anterior (incisal anatomy/mamelons) and posterior (cuspal inclines) for refined composite. XP technology for nonstick.



Acorn: creates the cuspal incline on posterior or the mamelons on anterior (including application of different colors)



M5-ANTERIOR

ITEM #: M5-ANTER

FOR PLACING AND SCULPTING CLASS IV VENEER COMPOSITE

Very thin Interproximal Carver to get into fine interproximal and gingival areas. Flexible for adapting to curvatures of the tooth. For veneers the blade is long enough to cover the length of the tooth.



M5-PACK

ITEM #: M5-PACK

FOR APPLYING AND PACKING COMPOSITE

Features one ball end and a flat ended plugger. Composite doesn't roll over the plugger like on a ball burnisher. Works best if applying a large amount of composite, because using only a ball burnisher can create voids.

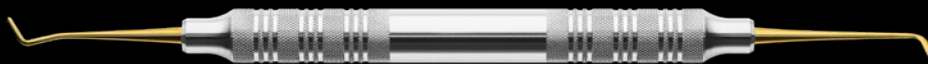
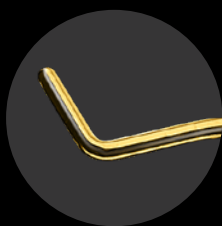


M5-CARVE

ITEM #: M5-CARVE

FOR REMOVING INTERPROXIMAL COMPOSITE MATERIAL

Strong, non-breaking blades are 25% thinner to help access interproximal flash without widening the contact. XP Technology prevents blades from dulling over repeated use making it easy to continue to remove and cut composite material. Blades are designed at ergonomic angles for easy access to hard-to-reach areas.



M5-MINI

ITEM #: M5-MINI

FOR PACKING AND APPLYING COMPOSITE

Mini short and fine spatula for better control in difficult to access areas and a 1mm plugger is ideal for packing composite in small posterior spaces or hard to fill anterior teeth.

